

Cleaning-Up Freight Projects through Community Tools and the National Environmental Policy Act

Thursday, February 7, 2013

3:15-5:15 pm

D. Kim Gaddy, Presenter



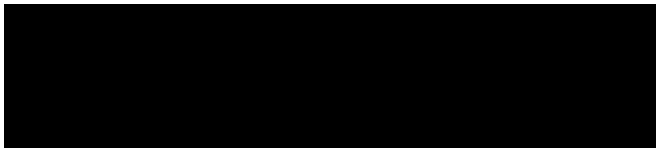
NJ Environmental Federation & Clean Water Fund



**Snapshot Study: Newark NJ
Diesel Monitoring and Truck Counts**

**Presented by
Deborah Kim Gaddy
Environmental Justice Organizer**

February 2013



Newark Children at Great Risk

- Asthma is the #1 reason for school absenteeism
- 25% (or 1 in 4) urban kids have asthma, double the state and national rates.
- Asthma related emergency room visits in NJ typically rise 26% on “bad air days” which number 1 of every 3 summer days.



This is an environmental health injustice.

(source: NJDEP and UMDNJ)



NJ Environmental Federation & Clean Water Fund

Essex County Asthma Related Death & Hospitalization Rates

~ An environmental health injustice ~

	Newark	Suburban/Rural Essex County
Death Rate (per 100,000)	5.8	2.8
Hospitalization Rate (per 100,000)	110	46

Source: UMDNJ



Environmental Justice



Calls for :

- **Fair treatment** of people regardless of race, socio economic and cultural background.
- **Meaningful participation** in the decision making process to protect the health and well-being of the affected community.
- **Ability to say “no”** to additional pollution sources in an overburdened community.
- **Dedicated resources** to restore the quality of life in the neighborhood.



NJ Environmental Federation & Clean Water Fund

Community Monitoring

a tool for advancing environmental justice



- **Engage community** in collecting data to document a problem
- **Gain understanding** of problem first hand
- **Tells our story** to the media, decision-makers and larger community
- **Helps frame** demands & plan of action



NJ Environmental Federation & Clean Water Fund

Expose Diesel Danger and Need for Action through Community Monitoring

- **Provided a “snapshot” of particulate soot levels found in Newark community parks, ball fields, and pools** located next to major truck and bus routes and frequented by Newark children engaged in outdoor activities on a typical hot summer day.
- **Three types of portable particle monitoring equipment were utilized** to measure principal particulate components of diesel soot emissions including PM2.5, ultrafine particles and black carbon.
- **Technical monitoring expertise of Boston-based Clean Air Task Force (CATF).**
- **Volunteer team of Newark-based students and community organizations** including Ironbound Community Corporation (ICC) & Weequahic Park Association (WPA), and NJ Environmental Justice Alliance, CWF’s Urban Environmental Institute .



Too Many Trucks – Too Close to Our Kids

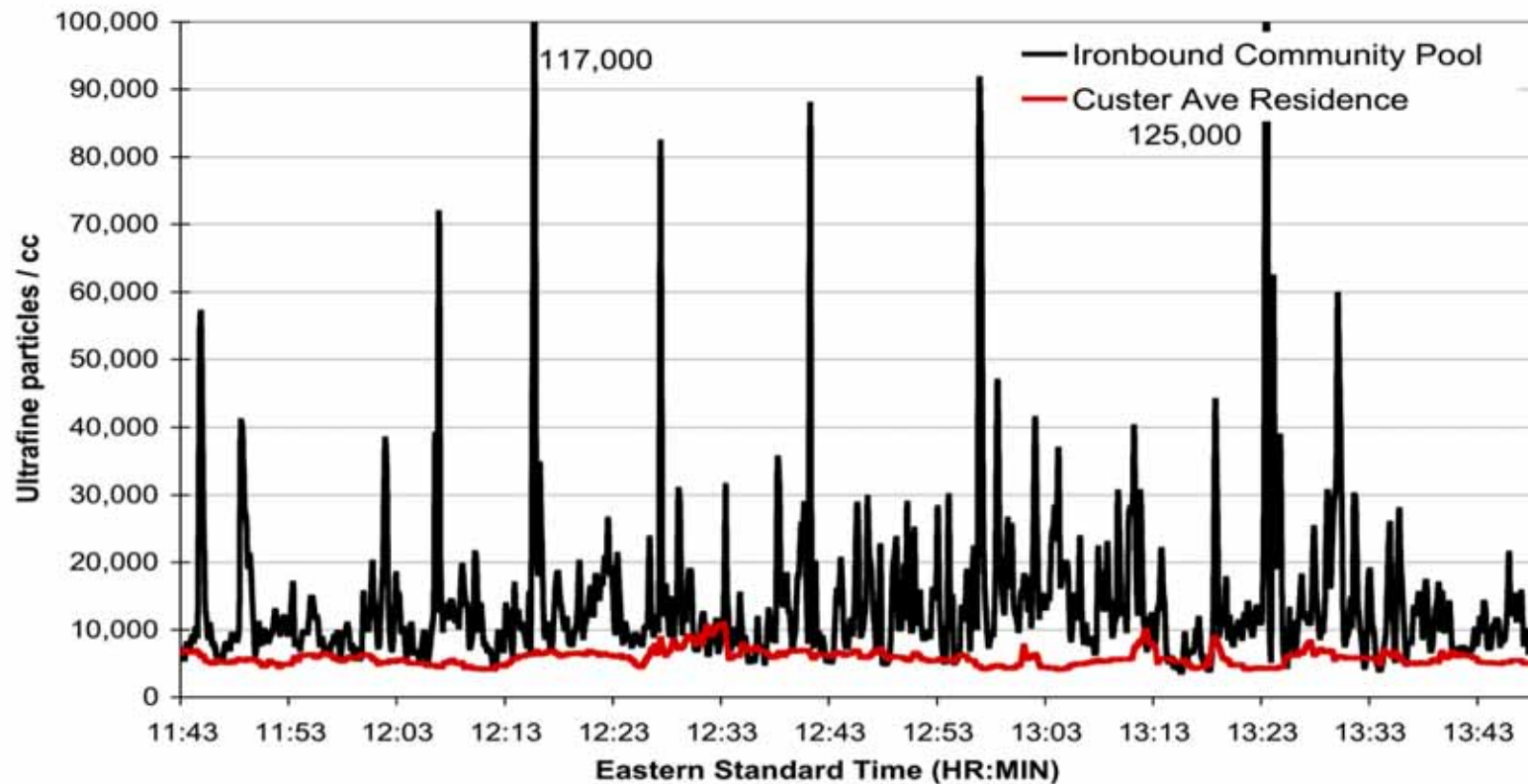
Numerous “snap shot” truck counts taken since 2005 where children frequent – parks, schools, recreational areas.



Truck count 250-300 trucks per hour (or 4-5 per minute).



Ultrafines at Ironbound Pool, Newark



Exposure to Diesel Exhaust in A Drayage Truck Before and after Retrofit: A Snapshot

Port of Jersey
April 7-9, 2009

Bruce Hill, Ph.D. Senior Scientist
James Gooch, Research Assistant



Array of Particle Monitors in cab



Truck View: Trucks ahead pollute cab



View from truck cab

Cab cam



Simultaneous
cab cam and
chase
video

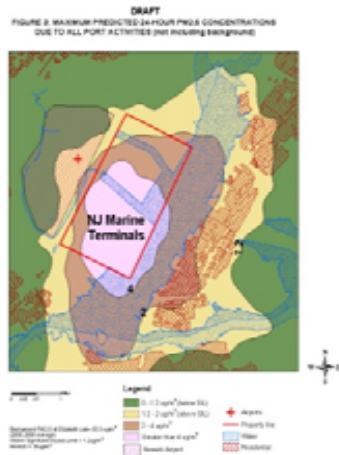
DPF eliminates UFP in trucks/traffic Following



Cab cam: Retrofits & No truck traffic ahead= clean air for driver.



Modeling or Monitoring?



NJDEP produced **computer generated “modeling” maps** of downwind impacts of the port on Jersey City, Bayonne and Staten Island, **but NOT for the streets of Newark and Elizabeth** where over 7,000 port trucks travel every day. Modeling efforts are still underway.

Eight additional “snap shot” community curbside air monitoring and truck counts were conducted in the port neighborhoods with a standardized data collection system in place.

Our findings were always the same.
- 250 to 300 trucks per hour -



You Don't Need To Study Us To Death To Know We Are Sick And Dying!

YEARLY MORE PEOPLE
DIE OF ASTHMA
THAN HOMICIDES
IN NEWARK.



Using Community Monitoring to our Best Advantage



Going Public:

- **Extensive and repeated coverage** from newspapers and TV each time we did truck counts and curbside monitoring, provides great visual story.
- **Made presentations and testified with medical doctor** at Newark Municipal Council, NJDEP Clean Air Council etc. which bolstered our credibility.
- **Helped local officials make personal connection** and understanding of the asthma epidemic when they and/or their kids are asthmatic.
- **Lisa Jackson, as NJDEP Commissioner and USEPA Administrator**, used our data in remarks to Congress and at port diesel press conferences.



Newark Takes Action:

- **Community awareness, concern and engagement** of schools, students, concerned residents, and officials
- **Ordinance adopted** (2007) by city to reduce diesel pollution including participation in state retrofitting program
- **Resolution adopted** supporting Coalition for Healthy Ports
- **Created Port Committee** (2011) of the Municipal Council
- **Trucks rerouted** from recreation area and a school in Ironbound
- **Closed Roberto Clemente Ballfield** on McCarter Hyway
- **Sustainability Action Plan** calls for asthma, diesel & GHG reduction
- **First Cumulative Impact Ordinance** being finalized



State Expands Diesel Reduction Effort:

- **Continues to fund retrofits for public fleets** as per the 2005 law



Governor signs Executive Order #60 (April 2011) which establishes a pilot program and funding for construction equipment used in state contracts. Special consideration given to urban projects. Hope to extend to all state contracts in 2014.

- **Serve advisory role** to the NJDEP in the development of modeling, monitoring and specific clean air strategies.



What is Next?

Kids Clean Air Zones

Diesel Buffers



Healthy Ports

Clean Air/Good Jobs



NJ Environmental Federation & Clean Water Fund

Establish “Kids Clean Air Zones”

Target diesel “hot spots” in neighborhoods abutting port and other commerce where children are most present and active (schools, play and athletic areas, parks).

Promote:

- Retrofit, replace & scrap local dirty diesel vehicles/equipment
- Truck rerouting
- Rest stops and loading docks with electric hookups
- Adopt “Idle Free” policy (10 second shut off)





Coalition for Healthy Ports “Take Back the Ports” Campaign

Adopt port-related Community Benefit Agreements

- Cleaner air
- Safer working conditions and living wages
- Other benefits for port communities.



Reform & modernization of the port trucking industry

- Modernizing or scrapping old highly-polluting trucks, providing electric hookups.
- Increasing efficiencies of goods movements; grow the port while polluting less.
- Enforcing environmental regulations, anti-idling/traffic ordinances, labor laws.
- Providing living wages, health and other benefits to retain truckers.
- Long term diesel reductions required as part of the permit to raise the Bayonne Bridge.



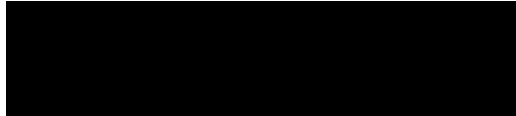


FOR MORE INFORMATION:

<http://www.cleanwateraction.org/feature/clean-air-campaign>

<http://cleanandsafeports.org/new-yorknew-jersey/>

<http://www.stophesoot.org>



www.cleanwateraction.org/njef



www.cleanwaterfund.org

State Office:

198 Brighton Avenue, 2nd floor

Long Branch , NJ 07719

Phone: 732-963-9714; Fax: 732-963-9876

Email: agoldsmith@cleanwater.org

State Director: Amy Goldsmith

North Jersey Office:

559 Bloomfield Avenue

Montclair, NJ 07042

Phone: 973-744-3005; Fax: (973) 744-3069

Email: kgaddy@cleanwater.org

Environmental Justice Organizer: Kim Gaddy



NJ Environmental Federation & Clean Water Fund